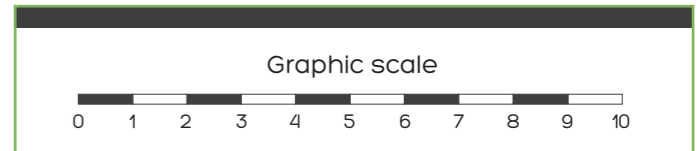


HOUSE	CALLOSA+	
Situation	Plot 27	
BASEMENT		
INTERIOR FLOOR AREA		
0.1	Hall	44,2ft ² (4,11m ²)
Total		44,2ft ² (4,11m ²)
EXTERIOR FLOOR AREA		
S1	Covered parking	754,3ft ² (70,08m ²)
Total		754,3ft ² (70,08m ²)
HOUSE		
FLOOR AREA		
Interior		2.349,2ft ² (218,25m ²)
Exterior		2.169,8ft ² (201,58m ²)
TOTAL		4.519,0ft ² (419,83m ²)
POOL		663,3ft ² (61,62m ²)
TOTAL BUILT AREA		
Basement		103,6ft ² (9,63m ²)
Ground floor		1.350,0ft ² (125,42m ²)
First floor		1.456,9ft ² (135,35m ²)
TOTAL		2.910,6ft ² (270,40m ²)

The indicated areas are calculated according to the Decreto 218/2005 of information to the consumer in the sale and lease of houses.

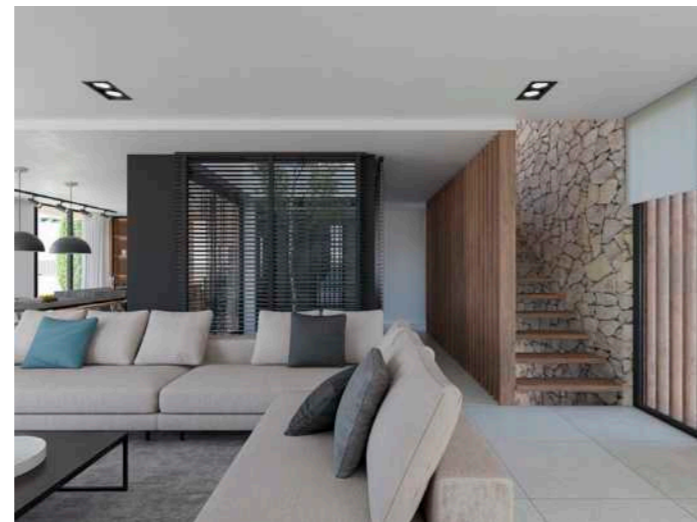
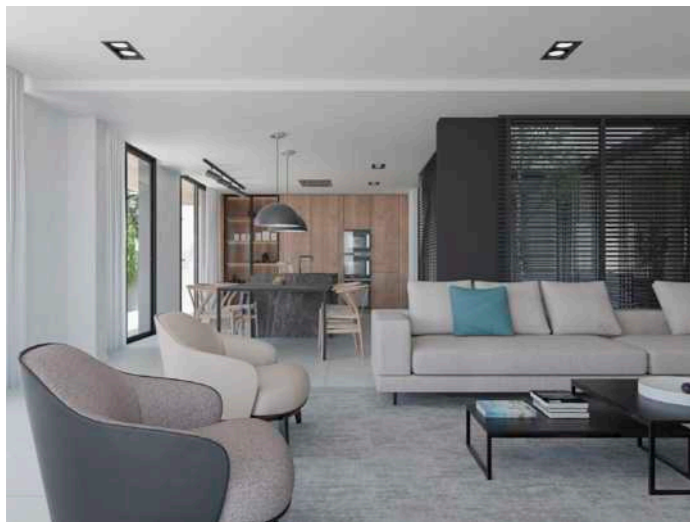
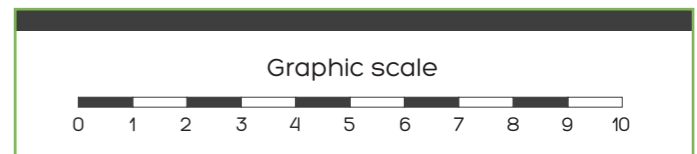


This document (both in its graphic part and the data referring to surfaces) is merely indicative, without prejudice to the most accurate information contained in the technical documentation of the home. The situation of the house and the exteriors may vary depending on the plot acquired. All the furniture shown in this plan, with the exception of the kitchen, toilets, bathrooms and cabinets, has been included for merely indicative and decorative purposes.



HOUSE	CALLOSA+	
Situation	Plot 27	
GROUND FLOOR		
INTERIOR FLOOR AREA		
1.1	Hall	138,5ft ² (12.87m ²)
1.2	Corridor	75,3ft ² (7.00m ²)
1.3	Living-Dining-Kitchen	776,6ft ² (72.15m ²)
1.4	Toilet	37,8ft ² (3.51m ²)
1.5	Facilities/Laundry	46,7ft ² (4.34m ²)
1.6	Stairs	57,6ft ² (5.35m ²)
Total		1.132,5ft ² (105.21m ²)
EXTERIOR FLOOR AREA		
E1	Covered entrance	138,0ft ² (12.82m ²)
E2	Porch	634,5ft ² (58.95m ²)
E3	Courtyard	75,0ft ² (6.97m ²)
Total		847,5ft ² (78.74m ²)
HOUSE		
FLOOR AREA		
Interior		2.349,2ft ² (218.25m ²)
Exterior		2.169,8ft ² (201.58m ²)
TOTAL		4.519,0ft ² (419.83m ²)
POOL		663,3ft ² (61.62m ²)

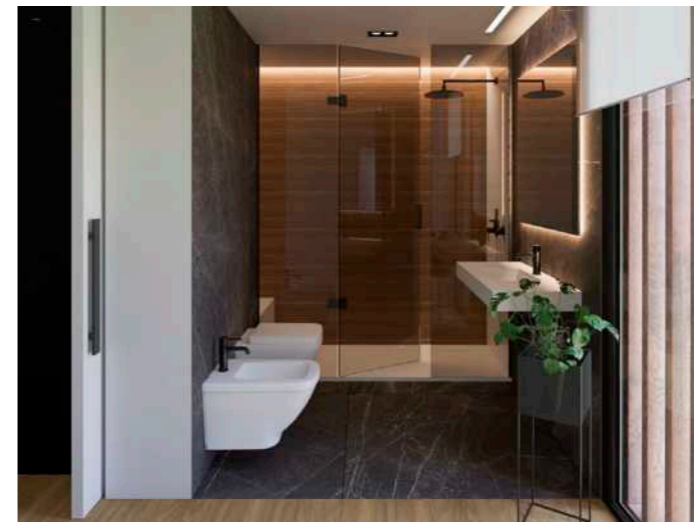
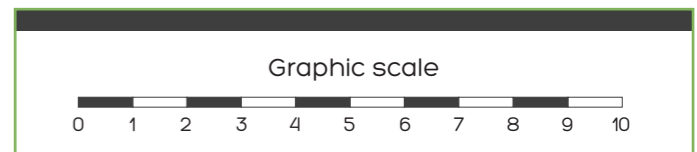
The indicated areas are calculated according to the Decreto 218/2005 of information to the consumer in the sale and lease of houses.





HOUSE	CALLOSA+	
Situation	Plot 27	
FIRST FLOOR		
INTERIOR FLOOR AREA		
2.1	Corridor	157,0ft ² (14.59m ²)
2.2	Stairs	57,6ft ² (5.35m ²)
2.3	Bedroom 1	240,3ft ² (22.32m ²)
2.4	Dressing room 1	72,0ft ² (6.69m ²)
2.5	Bath 1	127,6ft ² (11.86m ²)
2.6	Bedroom 2	172,6ft ² (16.04m ²)
2.7	Dressing room 2	48,6ft ² (4.52m ²)
2.8	Bath 2	69,0ft ² (6.41m ²)
2.9	Bedroom 3	160,7ft ² (14.93m ²)
2.10	Bath 3	67,0ft ² (6.22m ²)
Total		1172,5ft ² (108.93m ²)
EXTERIOR FLOOR AREA		
T1	Covered terrace	567,9ft ² (52.76m ²)
HOUSE		
FLOOR AREA		
Interior		2.349,2ft ² (218.25m ²)
Exterior		2.169,8ft ² (201.58m ²)
TOTAL		4.519,0ft ² (419.83m ²)
POOL		663,3ft ² (61.62m ²)

The indicated areas are calculated according to the Decreto 218/2005 of information to the consumer in the sale and lease of houses.



This document (both in its graphic part and the data referring to surfaces) is merely indicative, without prejudice to the most accurate information contained in the technical documentation of the home. The situation of the house and the exteriors may vary depending on the plot acquired. All the furniture shown in this plan, with the exception of the kitchen, toilets, bathrooms and cabinets, has been included for merely indicative and decorative purposes.