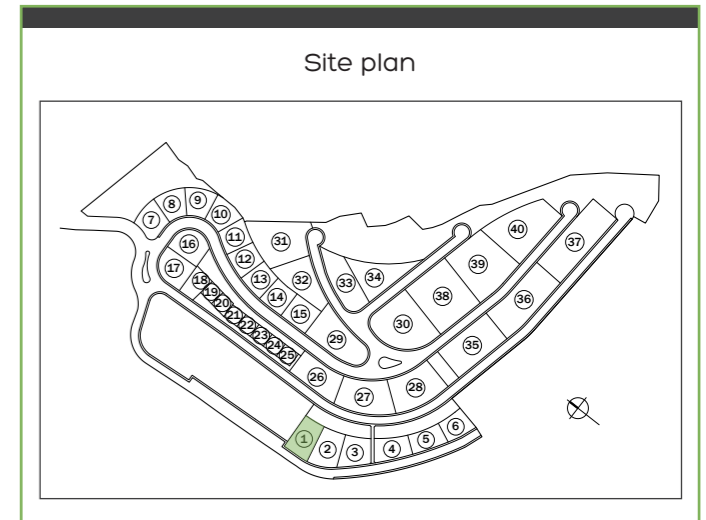
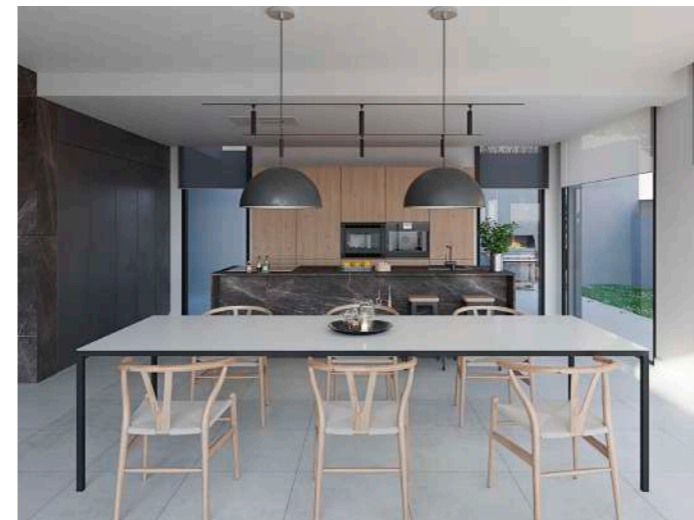
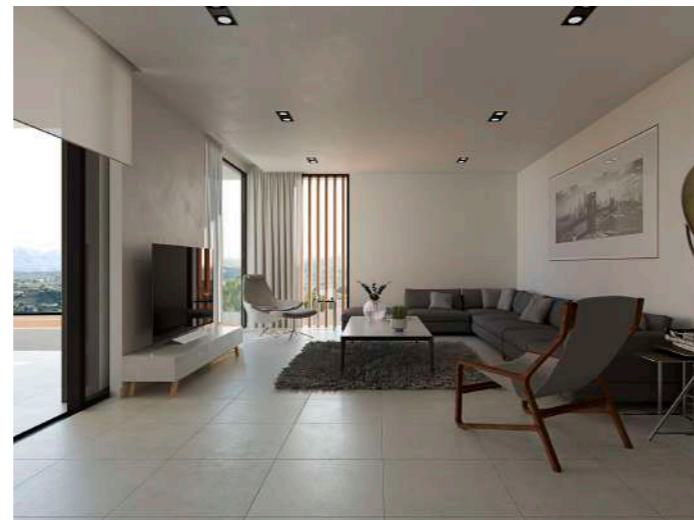
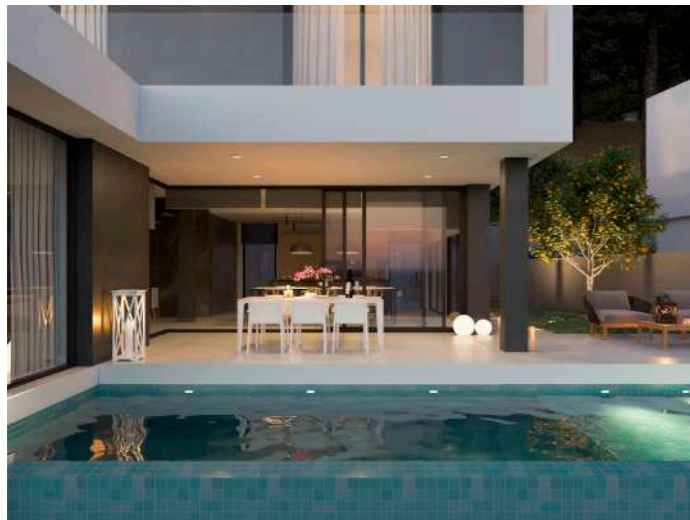
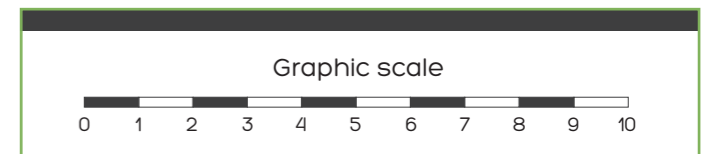




HOUSE		BENISSA
Situation		Plot 52
GROUND FLOOR		
INTERIOR FLOOR AREA		
1.1	Hall	49,5ft ² (4,60m ²)
1.2	Corridor	73,1ft ² (6,79m ²)
1.3	Living	406,5ft ² (37,77m ²)
1.4	Kitchen-Dining	378,7ft ² (35,18m ²)
1.5	Toilet 1	32,5ft ² (3,02m ²)
1.6	Bedroom 4	159,2ft ² (14,79m ²)
1.7	Bath 3	43,0ft ² (4,00m ²)
1.8	Facilities/Laundry	39,4ft ² (3,66m ²)
Total		1182,0ft² (109,81m²)
EXTERIOR FLOOR AREA		
E1	Covered Terrace	208,5ft ² (19,37m ²)
E2	Solarium Pool	295,6ft ² (27,46m ²)
E3	Covered Entrance	68,5ft ² (6,36m ²)
Total		572,6ft² (53,19m²)
HOUSE		
FLOOR AREA		
Interior		2.216,4ft ² (205,91m ²)
Exterior		719,2ft ² (66,82m ²)
TOTAL		2.935,6ft² (272,73m²)
SWIMMING POOL		213,2ft² (19,81m²)

The indicated areas are calculated according to the Decreto 218/2005 of information to the consumer in the sale and lease of houses.

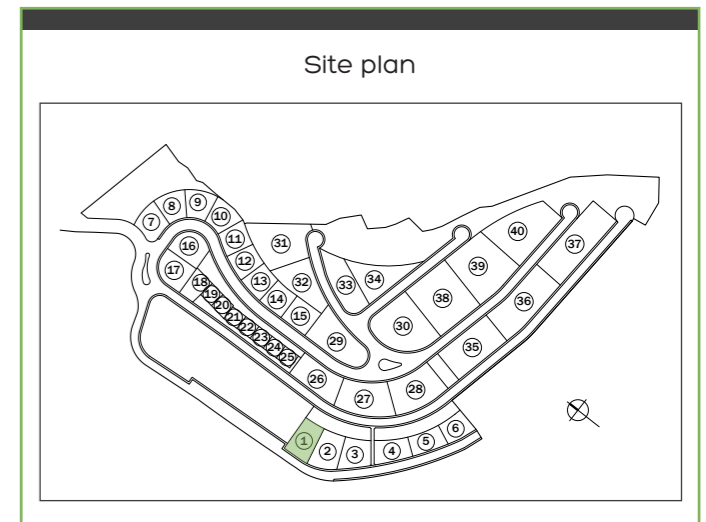
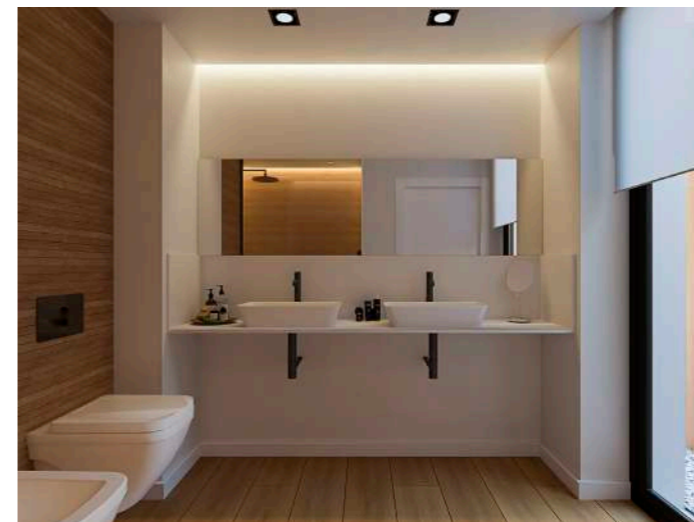
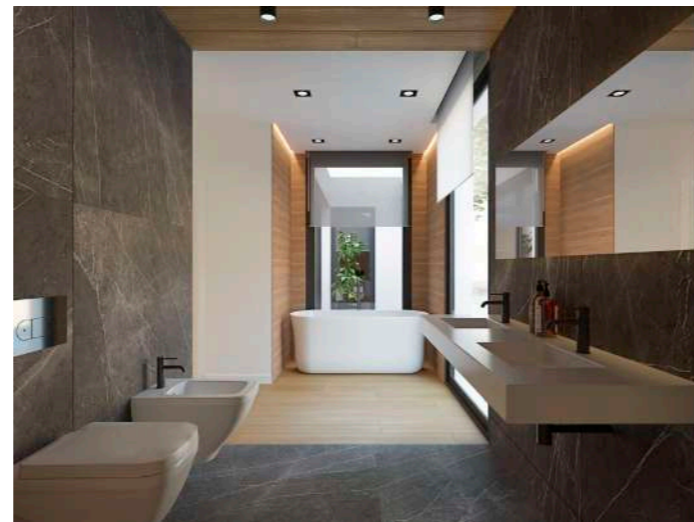
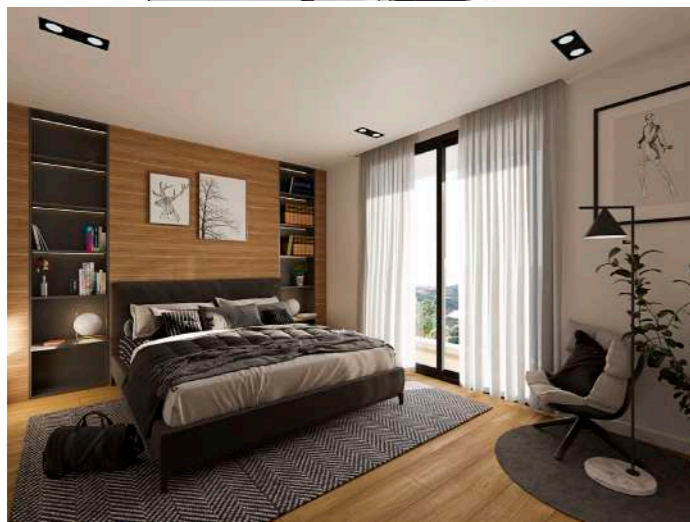
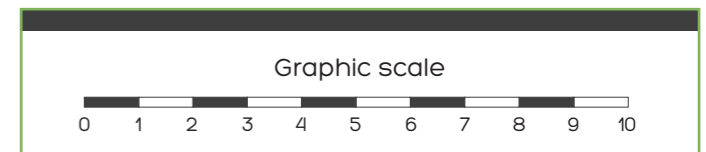


This document (both in its graphic part and the data referring to surfaces) is merely indicative, without prejudice to the most accurate information contained in the technical documentation of the home. The situation of the house and the exteriors may vary depending on the plot acquired. All the furniture shown in this plan, with the exception of the kitchen, toilets, bathrooms and cabinets, has been included for merely indicative and decorative purposes.



HOUSE		BENISSA
Situation		Plot 52
FIRST FLOOR		
SUPERFICIES ÚTILES INTERIORES		
2.1	Corridor	145,7ft ² (13.54m ²)
2.2	Bedroom 1	209,6 ft ² (19.47m ²)
2.3	Dressing room	75,4 ft ² (7.01m ²)
2.4	Bath 1	119,9 ft ² (11.14m ²)
2.5	Bedroom 2	180,3 ft ² (16.75m ²)
2.6	Bedroom 3	177,8 ft ² (16.52m ²)
2.7	Bath 2	70,3 ft ² (6.53m ²)
2.8	Stairs	55,3 ft ² (5.14m ²)
Total		1034,4 ft ² (96.10m ²)
EXTERIOR FLOOR AREA		
T1	Covered Terrace	146,7 ft ² (13.63m ²)
VIVIENDA		
FLOOR AREA		
Interior		2.216,4 ft ² (205.91m ²)
Exterior		719,2 ft ² (66.82m ²)
TOTAL		2.935,6 ft ² (272.73m ²)
TOTAL BUILT AREA		
Ground Floor		1476,3 ft ² (137.15m ²)
First Floor		1291,1 ft ² (119.95m ²)
TOTAL		2.767,4 ft ² (257.10m ²)

The indicated areas are calculated according to the Decreto 218/2005 of information to the consumer in the sale and lease of houses.



This document (both in its graphic part and the data referring to surfaces) is merely indicative, without prejudice to the most accurate information contained in the technical documentation of the home. The situation of the house and the exteriors may vary depending on the plot acquired. All the furniture shown in this plan, with the exception of the kitchen, toilets, bathrooms and cabinets, has been included for merely indicative and decorative purposes.