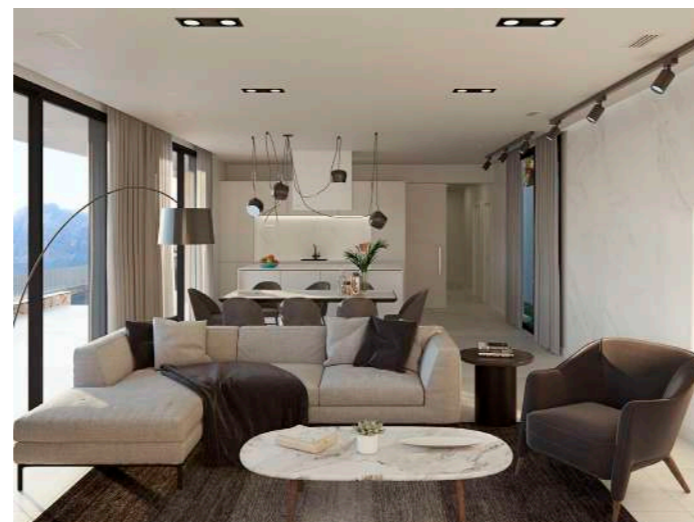
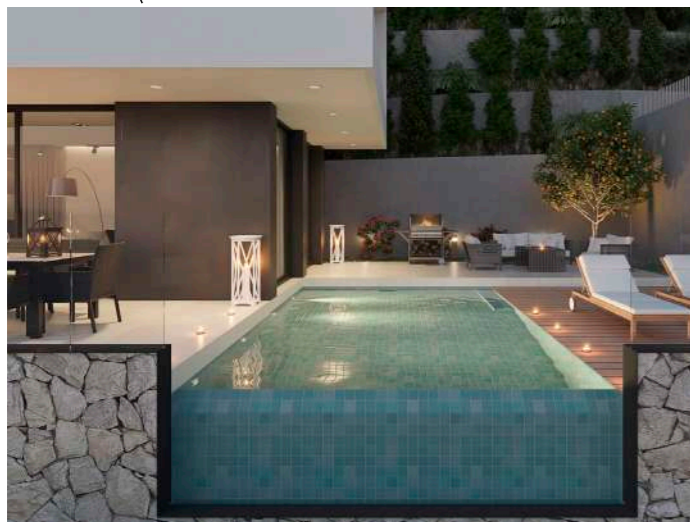
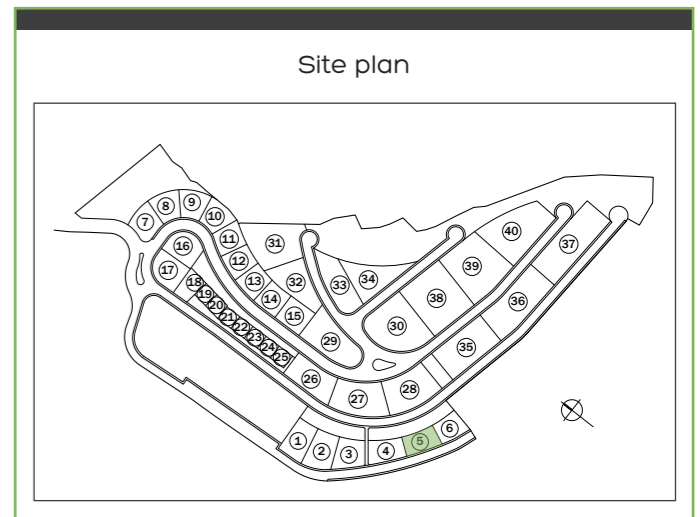
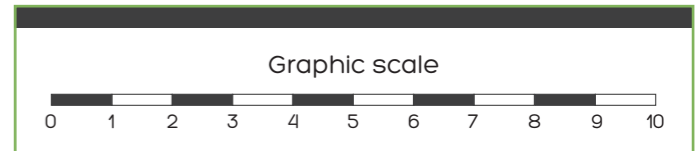




HOUSE	ALTEA	
Situation	Plot 56	
GROUND FLOOR		
INTERIOR FLOOR AREA		
1.1	Hall	140,8ft ² (13.08m ²)
1.2	Living-Dining-Kitchen	543,6ft ² (50.50m ²)
1.3	Bath 3	65,8ft ² (6.11m ²)
1.4	Bedroom 4	145,4ft ² (13.51m ²)
1.5	Facilities/Laundry	31,7ft ² (2.95m ²)
Total		927,3ft ² (86.15m ²)
EXTERIOR FLOOR AREA		
E1	Porch 1	459,1ft ² (42.65m ²)
E2	Solarium Swimming	438,5ft ² (40.74m ²)
Total		897,6ft ² (83.39m ²)
HOUSE		
FLOOR AREA		
Interior		1.788,3ft ² (166.14m ²)
Exterior		1.137,3ft ² (105.66m ²)
TOTAL		2.925,6ft ² (271.80m ²)
SWIMMING POOL		239,7ft ² (22.27m ²)

The indicated areas are calculated according to the Decreto 218/2005 of information to the consumer in the sale and lease of houses.

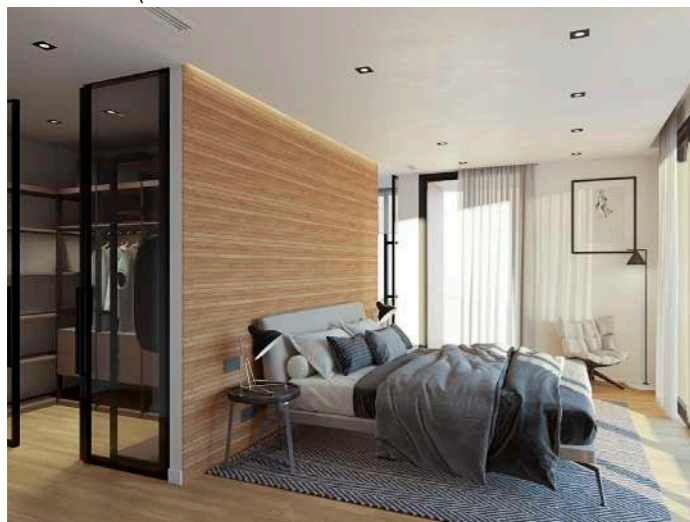
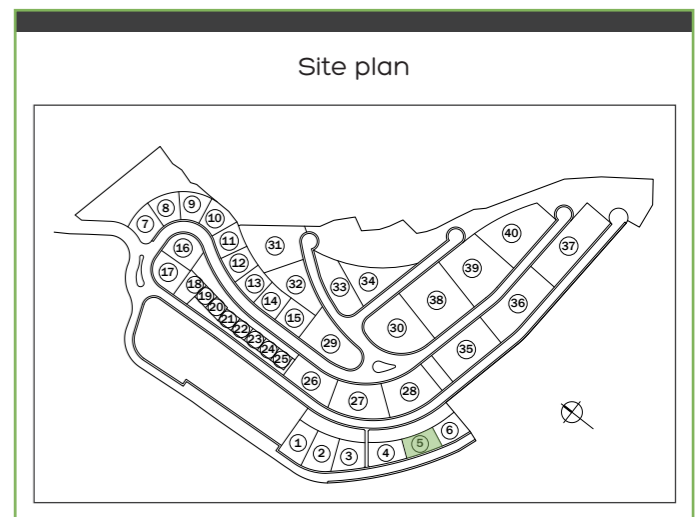
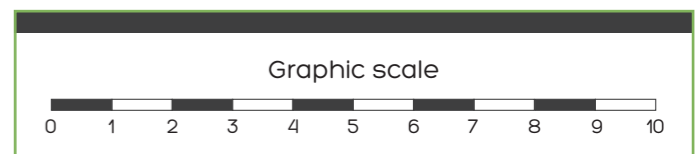


This document (both in its graphic part and the data referring to surfaces) is merely indicative, without prejudice to the most accurate information contained in the technical documentation of the home. The situation of the house and the exteriors may vary depending on the plot acquired. All the furniture shown in this plan, with the exception of the kitchen, toilets, bathrooms and cabinets, has been included for merely indicative and decorative purposes.



HOUSE		ALTEA
Situation		Plot 56
FIRST FLOOR		
INTERIOR FLOOR AREA		
2.1	Stairs	167,8ft ² (15.59m ²)
2.2	Corridor	191,5ft ² (17.79m ²)
2.3	Bedroom 1	207,9ft ² (19.32m ²)
2.4	Dressing room	144,8ft ² (13.45m ²)
2.5	Bath 1	212,1ft ² (19.71m ²)
2.6	Bedroom 2	152,7ft ² (14.19m ²)
2.7	Bedroom 3	158,4ft ² (14.72m ²)
2.8	Bath 2	163,8ft ² (15.22m ²)
Total		1.937,4ft ² (179.99m ²)
EXTERIOR FLOOR AREA		
T1	Covered Terrace	1.316,1ft ² (122.27m ²)
HOUSE		
FLOOR AREA		
Interior		1.788,3ft ² (166.14m ²)
Exterior		1.137,3ft ² (105.66m ²)
TOTAL		2.925,6ft ² (271.80m ²)
TOTAL BUILT AREA		
Ground Floor		1.144,9ft ² (106.37m ²)
First Floor		1.175,8ft ² (109.24m ²)
TOTAL		3.289,5ft ² (305.61m ²)

The indicated areas are calculated according to the Decreto 218/2005 of information to the consumer in the sale and lease of houses.



This document (both in its graphic part and the data referring to surfaces) is merely indicative, without prejudice to the most accurate information contained in the technical documentation of the home. The situation of the house and the exteriors may vary depending on the plot acquired. All the furniture shown in this plan, with the exception of the kitchen, toilets, bathrooms and cabinets, has been included for merely indicative and decorative purposes.